

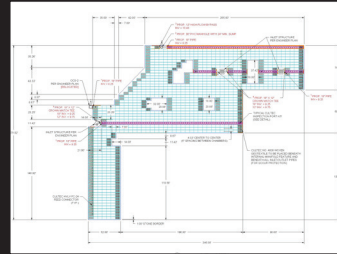
WE HAVE SOLUTIONS



Commercial Drainage



Separator Row



Design Services



Internal Manifold

CULTEC
StormGenie
DESIGN TOOL

Free Online Tool - Unlimited Usage

Cloud-Based Design Tool

		Contacto[®] 100HD	Recharger[®] 150XLHD	Recharger[®] 280HD	Recharger[®] 300HD	Recharger[®] 360HD	Recharger[®] 902HD	
Length	meters	2.44	3.35	2.44	2.29	1.27	1.25	
Installed Length	meters	2.29	3.12	2.13	2.15	1.12	1.12	
Width	mm	914	838	1194	1295	1524	1981	
Height	mm	318	470	673	762	914	1219	
Bare Chamber Storage	m ³ /m	0.17	0.25	0.56	0.61	0.93	1.61	
	l/m	173	246	565	607	929	1608	
Intermediate	m ³ /unit	0.40	0.77	1.20	1.31	1.04	1.80	
	l/unit	397	768	1204	1310	1037	1798	
Stand Alone	m ³ /unit	0.42	0.83	1.38	1.46	1.40	2.82	
	l/unit	424	825	1378	1461	1404	2820	
Min. Installed Storage	m ³ /m	0.36	0.45	0.86	0.98	1.41	2.51	
	l/m	360	460	857	976	1416	2509	
Intermediate	m ³ /unit	0.82	1.42	1.83	2.11	1.58	2.81	
	l/unit	818	1420	1825	2143	1579	2809	
Stand Alone	m ³ /unit	0.87	1.52	2.09	2.89	2.46	5.31	
	l/unit	871	1526	2086	2888	2457	5315	
Min. Cover Required	mm	Paved	356	356	356	457	457	610
		Unpaved	406	406	406	610	610	762

*The Recharger 300HD, 360HD, and 902HD only come in only one model type and require a separate end plate.
 The Intermediate model for the Recharger models 360HD or 902HD in this case means a model which has an installed length of 1.12 m located in the middle of a row.
 The Intermediate model for the Recharger model 300HD in this case means a model which has an installed length of 2.15 m located in the middle of a row.
 A stand alone model for the Recharger 300HD, 360HD, or 902HD is a single chamber with two end plates.
 All other models as stand alone units shall be called Model R.*

CULTEC CONTACTOR[®] & RECHARGER[®]
Plastic Chambers for Stormwater Management

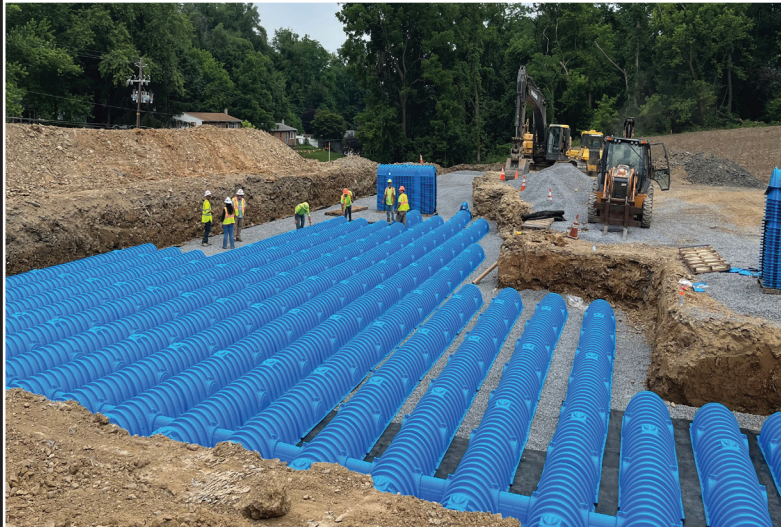


CULTEC CONTACTOR® & RECHARGER®

Plastic Chambers for Stormwater Management

**From Design to Installation,
our client services are unmatched.**

- Exceptional custom design services performed by stormwater chamber specialists.
- Most experienced project managers in the industry.
- Included in popular hydrology software.
- Free HydroCAD® CULTEC Edition available.
- Complimentary project-specific calculations and drawings.
- Lunch & Learn and PDH opportunities available upon request.
- Online CULTEC StormGenie Design Tool.



**The first stormwater chambers manufactured
with installations dating back over 35 years.**

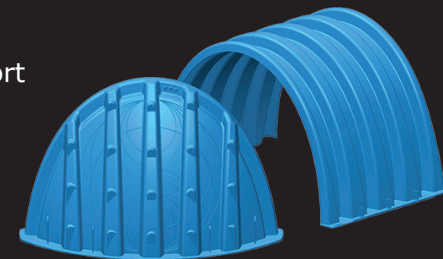
- Chamber systems are the least expensive and most efficient underground storage option.
- Most extensive product line in the industry.
- Internal manifold saves \$\$\$.
- Earn LEED Credits.
- Maximized storage capability in minimized area.
- Less downtime during handling and placement.
- Minimized shipping costs and stockpile area requirements.
- Sizes to accommodate extremely low-profile depth constraints and high-volume demands.



**Try our online
STORMGENIE DESIGN TOOL
on your next project.**

Scan to learn more.

- Stage-storage Report
- CAD drawings
- Bill of Materials



CULTEC

878 Federal Road • Brookfield, CT 06804 USA

P: 203-775-4416 • Toll Free: 1(800)4-CULTEC • F: 203-775-5887 • www.cultec.com • [f](#) [in](#) [i](#)

