

WE HAVE SOLUTIONS



Commercial Drainage



Residential Drainage



Dry Well Applications



Internal Manifold

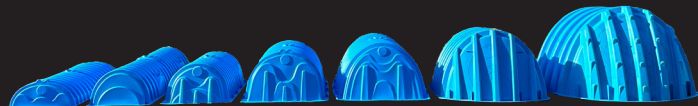


Free Online Tool - Unlimited Usage

Cloud-Based Design Tool

| | | Contactor 100 | Contactor 100HD | Recharger 150XLHD | Recharger 180HD | Recharger 280HD | Recharger 330XLHD | Recharger 360HD | Recharger 902HD |
|-------------------------------|-----------------------|------------------|--------------------|----------------------|--------------------|--------------------|----------------------|--------------------|--------------------|
| Length | feet | 8 | 8 | 11 | 7.33 | 8 | 8.5 | 4.17 | 4.10 |
| Installed Length | feet | 7.4 | 7.5 | 10.25 | 6.33 | 7 | 7 | 3.67 | 3.67 |
| Width | inches | 36 | 36 | 33 | 36 | 47 | 52 | 60 | 78 |
| Height | inches | 12.5 | 12.5 | 18.5 | 20.5 | 26.5 | 30.5 | 36 | 48 |
| Bare Chamber Storage | ft ³ /ft | 1.961 | 1.866 | 2.650 | 3.445 | 6.079 | 7.459 | 10.00 | 17.31 |
| | gal./ft | 14.67 | 13.96 | 19.82 | 25.77 | 45.48 | 55.80 | 74.80 | 129.50 |
| | | | | | | | | | |
| Intermediate | ft ³ /unit | 14.51 | 14.00 | 27.16 | 21.81 | 42.55 | 52.21 | 36.66 | 63.47 |
| | gal./unit | 109 | 105 | 203 | 163 | 318 | 391 | 274 | 475 |
| Stand Alone | ft ³ /unit | 15.69 | 14.93 | 29.15 | 25.25 | 48.63 | 63.40 | 49.58 | 99.51 |
| | gal./unit | 117 | 112 | 218 | 189 | 364 | 474 | 371 | 745 |
| Min. Installed Storage | ft ³ /ft | 3.90 | 3.84 | 4.89 | 5.59 | 9.21 | 11.32 | 15.20 | 27.06 |
| | gal./ft | 29 | 29 | 37 | 42 | 69 | 85 | 114 | 202 |
| | | | | | | | | | |
| Intermediate | ft ³ /unit | 28.85 | 28.81 | 50.17 | 35.39 | 64.46 | 79.26 | 55.73 | 99.28 |
| | gal./unit | 216 | 216 | 375 | 265 | 482 | 593 | 417 | 742 |
| Stand Alone | ft ³ /unit | 31.19 | 30.73 | 53.84 | 40.96 | 73.67 | 96.24 | 86.72 | 187.60 |
| | gal./unit | 233 | 230 | 403 | 306 | 551 | 720 | 649 | 1404 |
| Min. Cover Required | | | | | | | | | |
| | | | | | | | | | |
| Paved | inches | 8 | 8 | 8 | 8 | 8 | 10 | 12 | 12 |
| Unpaved | | n/a | 10 | 10 | 10 | 10 | 12 | 18 | 18 |

The Recharger 360HD and 902HD only come in only one model type and require a separate end plate.
The Intermediate model for the Recharger model 360HD or 902HD in this case means a model which has an installed length of 3.67' (1.12 m) located in the middle of a row.
A stand alone model for the Recharger 360HD or 902HD is a single chamber with two end plates.
All other models as stand alone units shall be called Model R.



CULTEC CONTACTOR® & RECHARGER®
Plastic Chambers for Stormwater Management

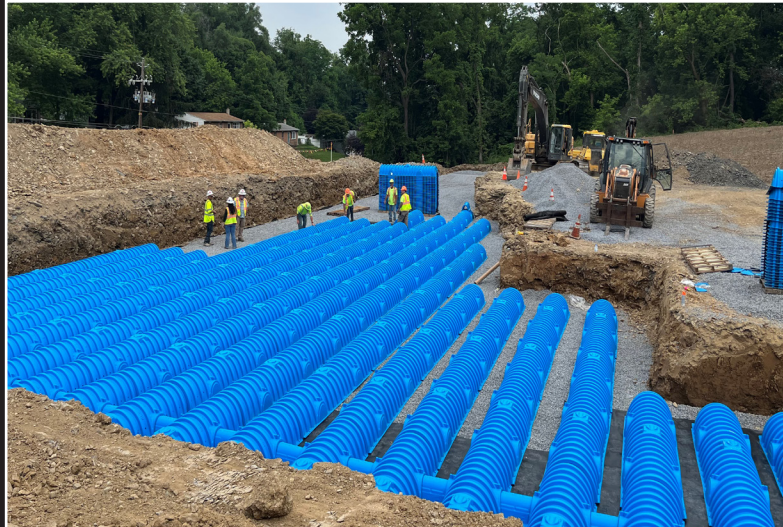


CULTEC CONTACTOR® & RECHARGER®

Plastic Chambers for Stormwater Management

**From Design to Installation,
our client services are unmatched.**

- Exceptional custom design services performed by stormwater chamber specialists.
- Most experienced project managers in the industry.
- Included in popular hydrology software.
- Free HydroCAD® CULTEC Edition available.
- Complimentary project-specific calculations and drawings.
- Lunch & Learn and PDH opportunities available upon request.
- Online CULTEC StormGenie Design Tool.



CULTEC

878 Federal Road • Brookfield, CT 06804 USA

P: 203-775-4416 • Toll Free: 1(800)4-CULTEC • F: 203-775-5887 • www.cultec.com • [f](#) [in](#) [i](#)

**The first stormwater chambers manufactured
with installations dating back over 35 years.**

- Chamber systems are the least expensive and most efficient underground storage option.
- Most extensive product line in the industry.
- Internal manifold saves \$\$\$.
- Earn LEED Credits.
- Maximized storage capability in minimized area.
- Less downtime during handling and placement.
- Minimized shipping costs and stockpile area requirements.
- Sizes to accommodate extremely low-profile depth constraints and high-volume demands.



**Try our online
STORMGENIE DESIGN TOOL
on your next project.**

Scan to learn more.

- Stage-storage Report
- CAD drawings
- Bill of Materials

