

CONTACTOR® & RECHARGER®

PLASTIC CHAMBERS FOR RESIDENTIAL DRAINAGE

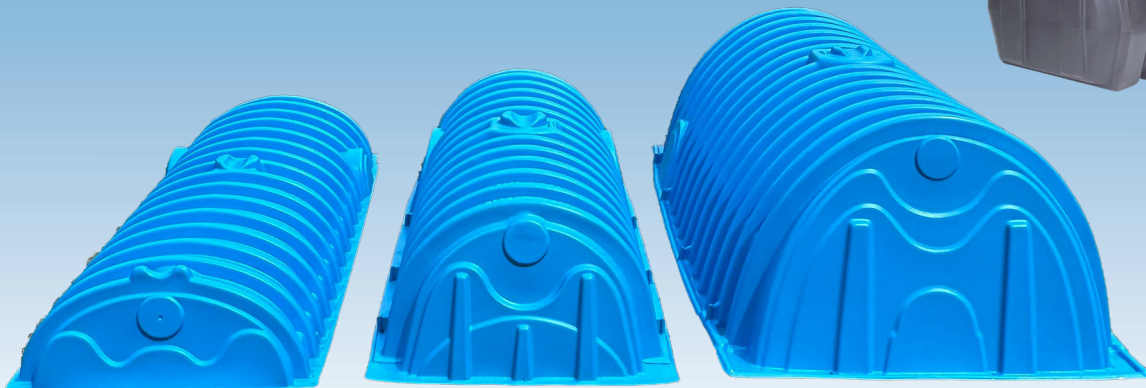


CULTEC Plastic Chambers

- Eliminate flooded basements and yards
- Collect and contain water from sump pump, washer machine, pool back wash or water softener discharge
- Control rainwater from gutters and impervious surfaces such as patio, tennis court and driveway

System Benefits

- Large storage capacity in small footprint
- Lightweight
- Can be carried by one or two people
- Easily transported by pick-up truck
- Install as a single unit or in a group
- Quick and easy installation
- Minimal site disturbance
- May be installed under driveways



Visit our website for more information.



Scan to
Learn More



System Calculator

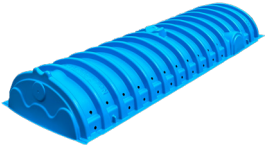
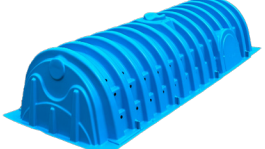
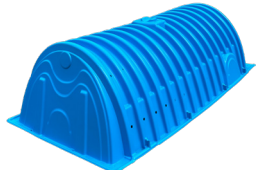


CAD / PDF Drawings



Installation Instructions

CULTEC Residential Drainage Sizing Table

			 Contactor 100HD (32 cf / chamber)			 Recharger 180HD (40 cf / chamber)			 Recharger 330XLHD (84 cf / chamber)		
Impervious Area (sf)	Rainfall Depth (in)	Storage Required (cf)	No. of Chambers Required	Storage Provided (cf)	Min. Area Required (sf)	No. of Chambers Required	Storage Provided (cf)	Min. Area Required (sf)	No. of Chambers Required	Storage Provided (cf)	Min. Area Required (sf)
0-250	1	21	1	32	30	1	40	25	1	84	37
	2	42	2	64	60	2	80	50	1	84	37
	3	63	2	64	60	2	80	50	1	84	37
	4	83	3	96	90	3	120	75	1	84	37
	5	104	4	128	120	3	120	75	2	168	74
	6	125	4	128	120	4	160	100	2	168	74
250-500	1	42	2	64	60	2	80	50	1	84	37
	2	83	3	96	90	3	120	75	1	84	37
	3	125	4	128	120	4	160	100	2	168	74
	4	167	6	192	180	5	200	125	2	168	74
	5	208	7	224	210	6	240	150	3	252	111
	6	250	8	256	240	7	280	175	3	252	111
500-750	1	63	2	64	60	2	80	50	1	84	37
	2	125	4	128	120	4	160	100	2	168	74
	3	188	6	192	180	5	200	125	3	252	111
	4	250	8	256	240	7	280	175	3	252	111
	5	313	10	320	300	8	320	200	4	336	148
	6	375	12	384	360	10	400	250	5	420	185
750-1000	1	83	3	96	90	3	120	75	1	84	37
	2	167	6	192	180	5	200	125	2	168	74
	3	250	8	256	240	7	280	175	3	252	111
	4	333	11	352	330	9	360	225	4	336	148
	5	417	14	448	420	11	440	275	5	420	185
	6	500	16	512	480	13	520	325	6	504	222

			Contactor 100HD (32 cf / chamber)			Recharger 180HD (40 cf / chamber)			Recharger 330XLHD (84 cf / chamber)		
Impervious Area (sf)	Rainfall Depth (in)	Storage Required (cf)	No. of Chambers Required	Storage Provided (cf)	Min. Area Required (sf)	No. of Chambers Required	Storage Provided (cf)	Min. Area Required (sf)	No. of Chambers Required	Storage Provided (cf)	Min. Area Required (sf)
1000-1250	1	104	4	128	120	3	120	75	2	168	74
	2	208	7	224	210	6	240	150	3	252	111
	3	313	10	320	300	8	320	200	4	336	148
	4	417	14	448	420	11	440	275	5	420	185
	5	521	17	544	510	14	560	350	7	588	259
	6	625	20	640	600	16	640	400	8	672	296
1250-1500	1	125	4	128	120	4	160	100	2	168	74
	2	250	8	256	240	7	280	175	3	252	111
	3	375	12	384	360	10	400	250	5	420	185
	4	500	16	512	480	13	520	325	6	504	222
	5	625	20	640	600	16	640	400	8	672	296
	6	750	24	768	720	19	760	475	9	756	333
1500-1750	1	146	5	160	150	4	160	100	2	168	74
	2	292	10	320	300	8	320	200	4	336	148
	3	438	14	448	420	11	440	275	6	504	222
	4	583	19	608	570	15	600	375	7	588	259
	5	729	23	736	690	19	760	475	9	756	333
	6	875	28	896	840	22	880	550	11	924	407
1750-2000	1	167	6	192	180	5	200	125	2	168	74
	2	333	11	352	330	9	360	225	4	336	148
	3	500	16	512	480	13	520	325	6	504	222
	4	667	21	672	630	17	680	425	8	672	296
	5	833	27	864	810	21	840	525	10	840	370
	6	1000	32	1024	960	25	1000	625	12	1008	444
2000-2250	1	188	6	192	180	5	200	125	3	252	111
	2	375	12	384	360	10	400	250	5	420	185
	3	563	18	576	540	15	600	375	7	588	259
	4	750	24	768	720	19	760	475	9	756	333
	5	938	30	960	900	24	960	600	12	1008	444
	6	1125	36	1152	1080	29	1160	725	14	1176	518
2250-2500	1	208	7	224	210	6	240	150	3	252	111
	2	417	14	448	420	11	440	275	5	420	185
	3	625	20	640	600	16	640	400	8	672	296
	4	833	27	864	810	21	840	525	10	840	370
	5	1042	33	1056	990	27	1080	675	13	1092	481
	6	1250	40	1280	1200	32	1280	800	15	1260	555

Cubic feet to gallons conversion: 1 CF = 7.48 gal

Calculations are estimated based on installed chamber length.



Need help determining rainfall amounts in your area?

Scan for the NOAA's National Weather Service Precipitation Frequency Data Server (PFDS)

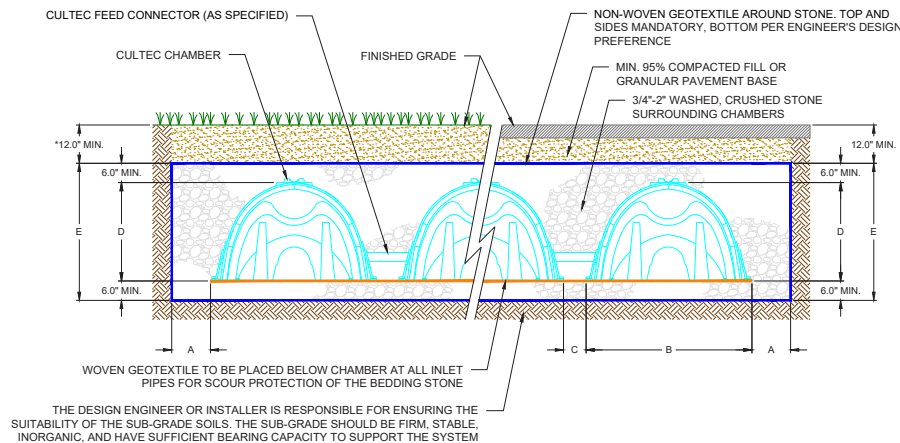
For more information, contact CULTEC at (203) 775-4416 or visit www.cultec.com.

RESIDENTIAL DRAINAGE

Specifications

		Contactor 100HD	Recharger 180HD	Recharger 330XLHD
Ref.	Bare Chamber Volume	1.87 ft ³ /ft 14.00 ft ³ /unit 105 gal	3.45 ft ³ /ft 21.81 ft ³ /unit 163 gal	7.46 ft ³ /ft 52.21 ft ³ /unit 391 gal
A	Stone Border	12"	12"	12"
B	Chamber Width	36"	36"	52"
C	Row Spacing	6"	6"	6"
D	Chamber Height	12"	20"	30"
E	Effective Depth	24"	32"	42"
	Chamber Length*	8'	7.33'	8.5'

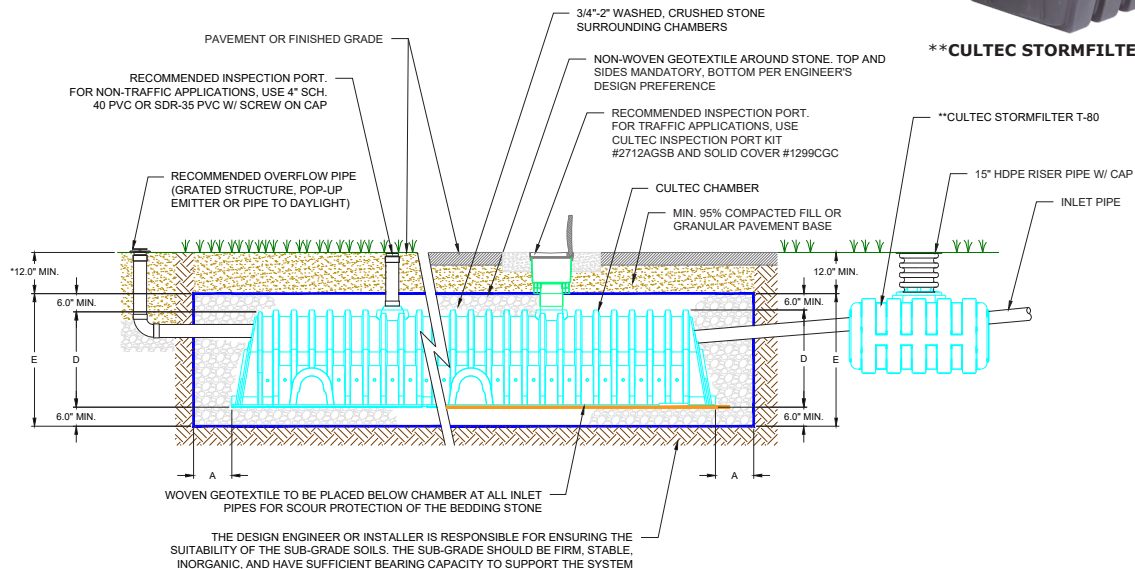
*Chamber length includes integral end walls.



*FOR NON-TRAFFIC APPLICATIONS, THE DEPTH OF COVER ABOVE THE EMBEDMENT STONE LAYER MAY BE REDUCED TO 6.0"



**CULTEC STORMFILTER T-80



*FOR NON-TRAFFIC APPLICATIONS, THE DEPTH OF COVER ABOVE THE EMBEDMENT STONE LAYER MAY BE REDUCED TO 6.0"

**CULTEC RECOMMENDS THE USE OF THE STORMFILTER T-80 UPSTREAM OF ALL SYSTEM INLETS. THE STORMFILTER T-80 MUST BE LOCATED IN A NON-TRAFFIC AREA

CULTEC

878 Federal Road • Brookfield, CT 06804 USA • CT-CustomerService@cultec.com

P: 203-775-4416 • Toll Free: 1(800)-4-CULTEC • F: 203-775-1462 • www.cultec.com

