

CSK Auto, Inc., Phoenix, AZ

Meeting local stormwater management regulations is not always easy, especially when land constraints are an issue. When retail auto giant CSK Auto looked to expand their Phoenix warehouse, maximizing land for expansion, parking areas and access drives were integral to the success of their new construction. That’s when CULTEC provided the solution by designing a multi-level subsurface retention system with the ability to store vast amounts of post-development stormwater runoff.



Engineers from Phoenix-based Evans Kuhn and Associates, Inc. specified a CULTEC two-tiered subsurface retention system to capture, treat and retain run-off until it could be displaced. The system included approximately 2,400 Recharger® 330 HD chambers constructed of high-density polyethylene, designed to maintain a significant permanent pool of water between precipitation events.

“The design flexibility of the chamber beds allowed configurations that were not possible with traditional underground retention storage methods, such as concrete vaults or corrugated metal piping, which both require more maintenance and in some cases even lift stations,” said Todd

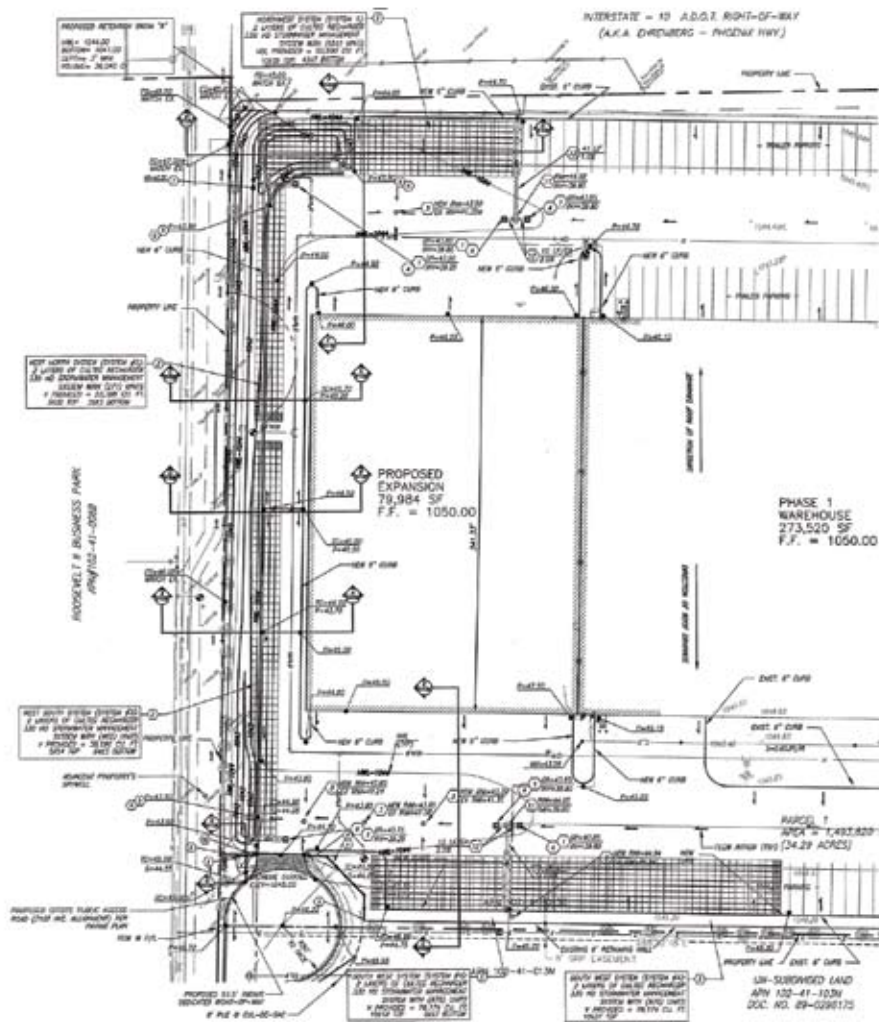
(continued on back)



CSK Auto, Inc.

Nedderman, the project's civil engineer from Evans Kuhn and Associates Inc. Nedderman continued by saying, "Working on a previously developed site with limited space for expansion can be challenging to design, both in terms of cost as well as the ability to provide enough land for adequate parking and access."

The CULTEC system not only maximized the available space, it also offered strength and durability. CULTEC's Recharger® 330 HD chambers are designed for traffic applications and are capable of withstanding the weight of 18-wheel trucks that visit the warehouse daily. The chambers feature a built-in endwall for strength throughout the system as well as a patented, overlapping rib connection, which affords easy installation and a stronger connection between chambers. Furthermore, CULTEC offers a 10-year warranty on all multi-level installations, a benefit not currently offered by any other system on the market.



CULTEC 878 Federal Road • PO Box 280 • Brookfield, CT 06804 • 203-775-4416 • 800-4-CULTEC • www.cultec.com

Protected by one or more of the following patents: U.S. Patent No. 5,087,151, U.S. Patent No. 5,419,838, U.S. Patent No. 6,129,482, U.S. Patent No. 6,322,288 B1. Other U.S. and Foreign patents. Other U.S. patents pending. RECHARGER®, CONTACTOR®, HVLV™ and STORMFILTER® are trade names of CULTEC, Inc.

Copyright 2007 CULTEC, Inc. All rights reserved. CUL075 CULCKSC01-07