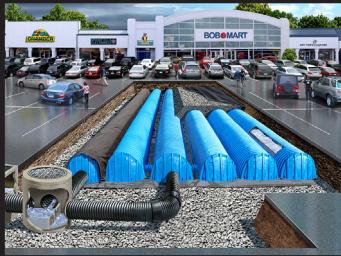


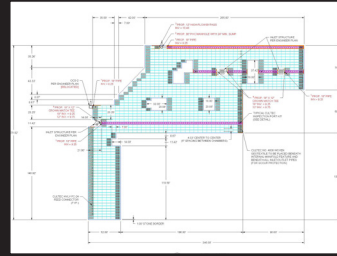
# WE HAVE SOLUTIONS



Commercial Drainage



Water Quality Row



Design Services



Internal Manifold

**CULTEC**  
StormGenie  
DESIGN TOOL

Free Online Tool - Unlimited Usage

Cloud-Based Design Tool

		<b>Contactor® 100HD</b>	<b>Recharger® 150XLHD</b>	<b>Recharger® 280HD</b>	<b>Recharger® 300HD</b>	<b>Recharger® 360HD</b>	<b>Recharger® 902HD</b>
<b>Length</b>	feet	8	11	8	7.54	4.17	4.10
<b>Installed Length</b>	feet	7.5	10.25	7	7.08	3.67	3.67
<b>Width</b>	inches	36	33	47	51	60	78
<b>Height</b>	inches	12.5	18.5	26.5	30	36	48
<b>Bare Chamber Storage</b>	ft³/ft gal/ft	1.866 13.96	2.650 19.82	6.079 45.48	6.53 48.85	10.00 74.80	17.31 129.50
<b>Intermediate</b>	ft³/unit gal./unit	14.00 105	27.16 203	42.55 318	46.27 346	36.66 274	63.47 475
<b>Stand Alone</b>	ft³/unit gal./unit	14.93 112	29.15 218	48.63 364	51.59 386	49.58 371	99.51 745
<b>Min. Installed Storage</b>	ft³/ft gal/ft	3.84 29	4.89 37	9.21 69	10.51 79	15.20 114	27.06 202
<b>Intermediate</b>	ft³/unit gal./unit	28.81 216	50.17 375	64.46 482	74.44 566	55.73 417	99.28 742
<b>Stand Alone</b>	ft³/unit gal./unit	30.73 230	53.84 403	73.67 551	101.99 763	86.72 649	187.60 1404
<b>Min. Cover Required</b>							
<b>Paved</b>	inches	14	14	14	18	18	24
<b>Unpaved</b>		16	16	16	24	24	30

*The Recharger 300HD, 360HD, and 902HD only come in only one model type and require a separate end plate.  
The Intermediate model for the Recharger models 360HD or 902HD in this case means a model which has an installed length of 3.67' located in the middle of a row.  
The Intermediate model for the Recharger model 300HD in this case means a model which has an installed length of 7.08' located in the middle of a row.  
A stand alone model for the Recharger 300HD, 360HD, or 902HD is a single chamber with two end plates.  
All other models as stand alone units shall be called Model R.*

**CULTEC CONTACTOR® & RECHARGER®**  
Plastic Chambers for Stormwater Management

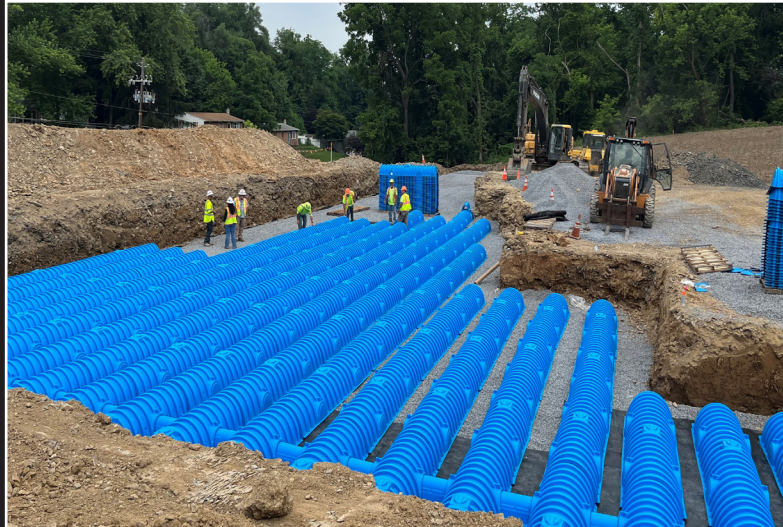


# CULTEC CONTACTOR® & RECHARGER®

## Plastic Chambers for Stormwater Management

**From Design to Installation,  
our client services are unmatched.**

- Exceptional custom design services performed by stormwater chamber specialists.
- Most experienced project managers in the industry.
- Featured in popular hydrology software, including HydroCAD®
- Complimentary project-specific calculations and drawings.
- Lunch & Learn and PDH opportunities available upon request.
- Online CULTEC StormGenie Design Tool.



### CULTEC

878 Federal Road • Brookfield, CT 06804 USA

P: 203-775-4416 • Toll Free: 1(800)4-CULTEC • F: 203-775-5887 • [www.cultec.com](http://www.cultec.com) • [f](#) [in](#) [i](#)

**The first stormwater chambers manufactured  
with installations dating back over 35 years.**

- Chamber systems are the least expensive and most efficient underground storage option.
- Most extensive product line in the industry.
- Internal manifold saves \$\$\$.
- Earn LEED Credits.
- Maximized storage capability in minimized area.
- Less downtime during handling and placement.
- Minimized shipping costs and stockpile area requirements.
- Sizes to accommodate extremely low-profile depth constraints and high-volume demands.



**Try our online  
STORMGENIE DESIGN TOOL  
on your next project.**

*Scan to learn more.*

- Stage-storage Report
- CAD drawings
- Bill of Materials

