

Contactor® & Recharger®

Plastic Chambers for Residential Drainage

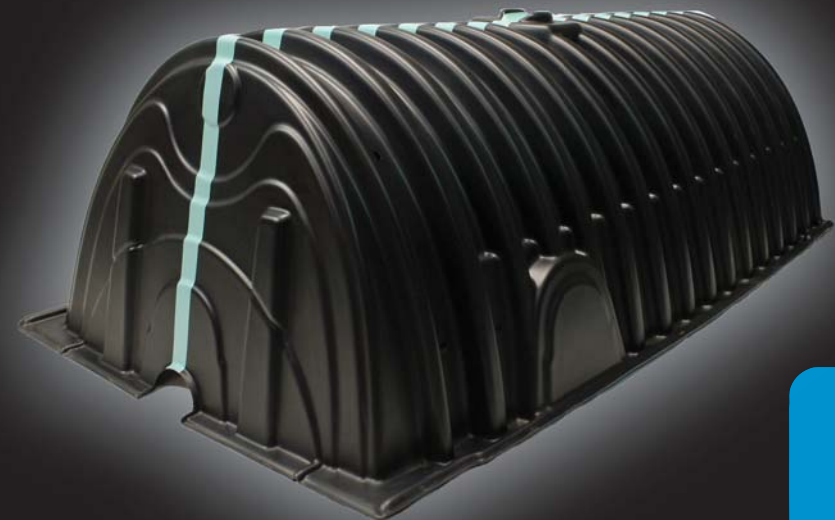


CULTEC Plastic Chambers

- Eliminate flooded basements and yards
- Act as drywells to contain water from sump pump, washer machine, pool backwash or water softener discharge
- Control rainwater from gutters and driveway
- Operate as septic leachfield systems

System Benefits

- Large storage capacity in small footprint
- Lightweight
- Can be carried by one or two people
- Easily transported by pick-up truck
- Install as a single unit or in a group
- Quick and easy installation
- Minimal site disturbance



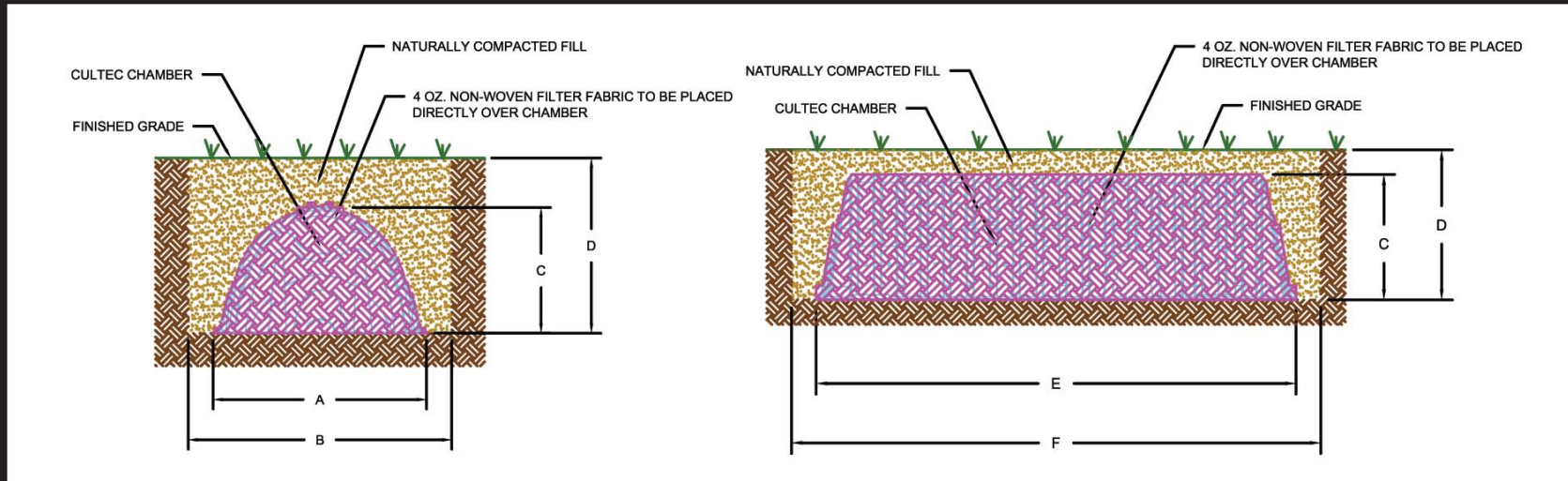
The Founder of Plastic Chamber Technology



Contactor® & Recharger®

Plastic Chambers as a Single Drywell - Gravel-less Application

OPTION 1: Lowest cost. Easiest to install. Based on chamber storage only. No stone.



Model	A Chamber Width	B Trench Width	C Chamber Height	D Trench Depth	E Chamber Length	F Trench Length	Bare Chamber Volume	
Contactor 100HD	36"	48"	12.5"	24.5"	8'	9'	14.93 ft ³	112 gal.
	914 mm	1219 mm	318 mm	622 mm	2.44 m	2.74 m	0.42 m ³	423 l
Recharger 150XLHD	33"	45"	18.5"	30.5"	11'	12'	29.15 ft ³	218 gal.
	838 mm	1143 mm	470 mm	775 mm	3.35 m	3.66 m	0.83 m ³	825 l
Recharger 280HD	47"	59"	26.5"	38.5"	8'	9'	48.63 ft ³	364 gal.
	1194 mm	1499 mm	673 mm	978 mm	2.44 m	2.74 m	1.38 m ³	1377 l
Recharger 330XLHD	52"	64"	30.5"	42.5"	8.5'	9.5'	63.4 ft ³	474 gal.
	1321 mm	1626 mm	775 mm	1080 mm	2.59 m	2.90 m	1.8 m ³	1795 l

All calculations and details are for a single Model R stand alone unit installed as a non-traffic application in a grassy area without stone. Values will differ for multiple interlocked units. Units may be installed with stone to provide additional storage volume. These calculations are based on the cross sectional dimensions listed above without using stone. For unpaved traffic, paved traffic applications, or installations under impervious areas such as patios, contact CULTEC for assistance.



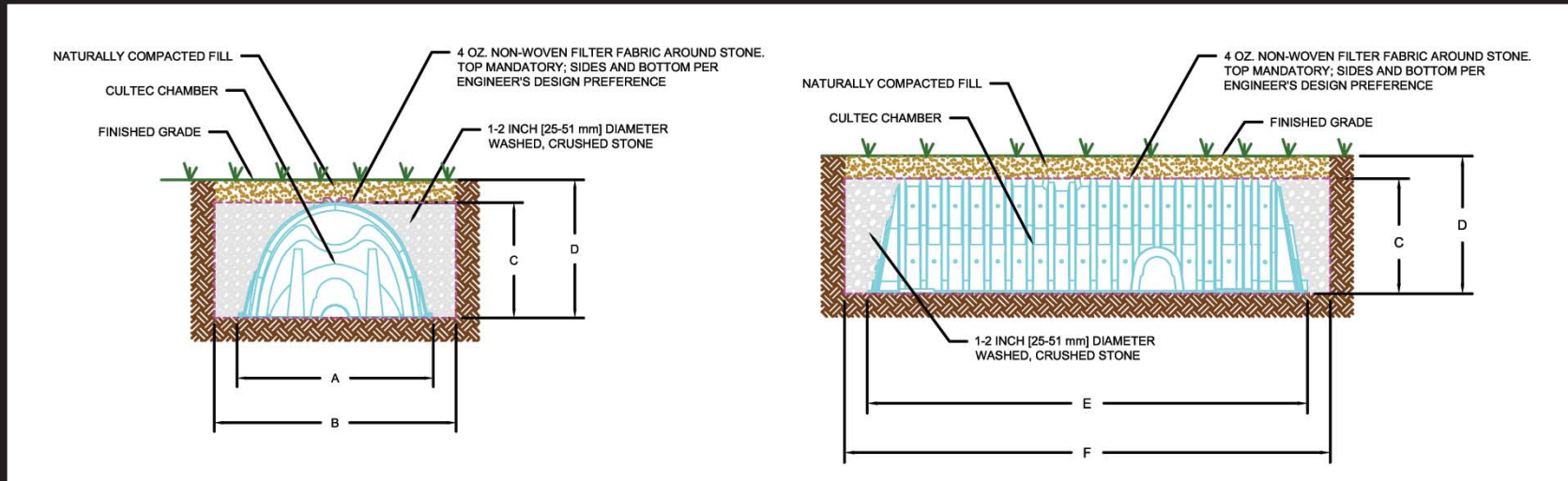
CULTEC

The Founder of Plastic Chamber Technology

Contactor® & Recharger®

Plastic Chambers as a Single Drywell - Non-Traffic Application

OPTION 2: A little more costly. A bit more labor intensive because of stone placement. Storage based on chamber and minimal stone.



Model	A Chamber Width	B Trench Width	C Chamber Height	D Trench Depth	E Chamber Length	F Trench Length	Bare Chamber Volume	Storage Volume per Installed Unit	Stone Required per Unit ¹		
Contactor 100HD	36"	48"	12.5"	24.5"	8'	9'	14.93 ft ³	112 gal.	23.96 ft ³	179 gal.	0.84 yd ³
	914 mm	1219 mm	318 mm	622 mm	2.44 m	2.74 m	0.42 m ³	423 l	0.68 m ³	678 l	0.64 m ³
Recharger 150XLHD	33"	45"	18.5"	30.5"	11'	12'	29.15 ft ³	218 gal.	45.24 ft ³	338 gal.	1.49 yd ³
	838 mm	1143 mm	470 mm	775 mm	3.35 m	3.66 m	0.83 m ³	825 l	1.28 m ³	1281 l	1.14 m ³
Recharger 280HD	47"	59"	26.5"	38.5"	8'	9'	48.63 ft ³	364 gal.	68.27 ft ³	511 gal.	1.82 yd ³
	1194 mm	1499 mm	673 mm	978 mm	2.44 m	2.74 m	1.38 m ³	1377 l	1.93 m ³	1933 l	1.39 m ³
Recharger 330XLHD	52"	64"	30.5"	42.5"	8.5'	9.5'	63.4 ft ³	474 gal.	89.55 ft ³	670 gal.	2.42 yd ³
	1321 mm	1626 mm	775 mm	1080 mm	2.59 m	2.90 m	1.8 m ³	1795 l	2.54 m ³	2536 l	1.85 m ³

All calculations and details are for a single Model R stand alone unit installed as a non-traffic application in a grassy area. Values will differ for multiple interlocked units.

¹Units may be installed with additional stone to provide additional storage volume.

These calculations for stone required per unit are based on the cross sectional dimensions listed above using stone.

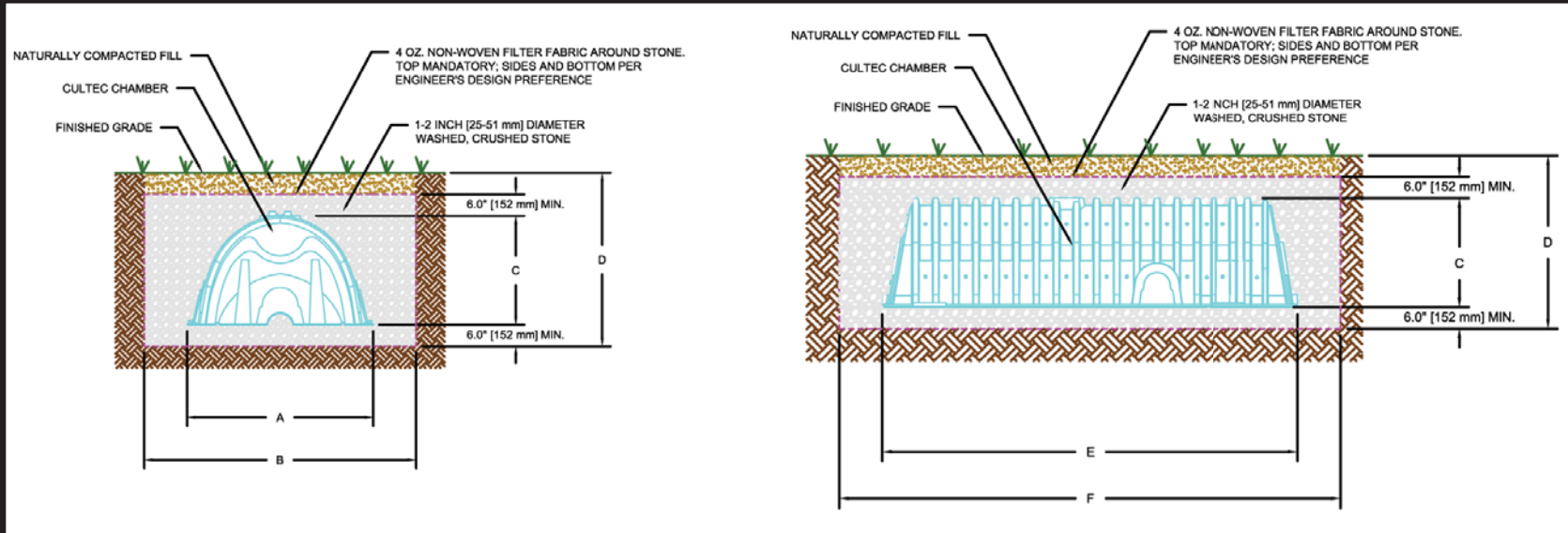
For unpaved traffic, paved traffic applications, or installations under impervious areas such as patios, contact CULTEC for assistance.



Contactor® & Recharger®

Plastic Chambers as a Single Drywell - Non-Traffic Application

OPTION 3: Most storage provided. Overall project cost increased by use of more stone. Storage based on chamber and stone.



Model	A Chamber Width	B Trench Width	C Chamber Height	D Trench Depth	E Chamber Length	F Trench Length	Bare Chamber Volume	Storage Volume per Installed Unit	Stone Required per Unit ¹		
Contactor 100HD	36"	60"	12.5"	30.5"	8'	10'	14.93 ft ³	112 gal.	49.79 ft ³	372 gal.	3.23 yd ³
	914 mm	1524 mm	318 mm	775 mm	2.44 m	3.05 m	0.42 m ³	423 l	1.41 m ³	1410 l	2.47 m ³
Recharger 150XLHD	33"	57"	18.5"	36.5"	11'	13'	29.15 ft ³	218 gal.	80.27 ft ³	600 gal.	4.73 yd ³
	838 mm	1448 mm	470 mm	927 mm	3.35 m	3.96 m	0.83 m ³	825 l	2.27 m ³	2273 l	3.62 m ³
Recharger 280HD	47"	71"	26.5"	44.5"	8'	10'	48.63 ft ³	364 gal.	105.11 ft ³	786 gal.	5.23 yd ³
	1194 mm	1803 mm	673 mm	1130 mm	2.44 m	3.05 m	1.38 m ³	1377 l	2.98 m ³	2976 l	4.00 m ³
Recharger 330XLHD	52"	76"	30.5"	48.5"	8.5'	10.5'	63.4 ft ³	474 gal.	132.25 ft ³	989 gal.	6.37 yd ³
	1321 mm	1930 mm	775 mm	1232 mm	2.59 m	3.20 m	1.8 m ³	1795 l	3.75 m ³	3745 l	4.87 m ³

All calculations and details are for a single Model R stand alone unit installed as a non-traffic application in a grassy area. Values will differ for multiple interlocked units.

¹Units may be installed with additional stone to provide additional storage volume.

These calculations for stone required per unit are based on the cross sectional dimensions listed above using stone.

For unpaved traffic, paved traffic applications, or installations under impervious areas such as patios, contact CULTEC for assistance.

CULTEC, Inc.

878 Federal Road • P.O. Box 280 • Brookfield, CT 06804 USA

P: 203-775-4416 • Toll Free: 1(800)4-CULTEC • F: 203-775-1462 • www.cultec.com •  

