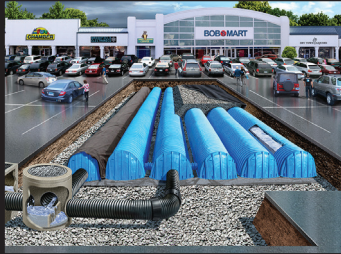


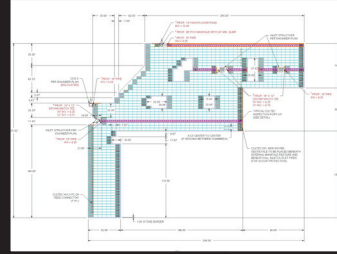
WE HAVE SOLUTIONS



Commercial Drainage



Separator Row



Design Services



Internal Manifold



Free Online Tool - Unlimited Usage

Cloud-Based Design Tool

		Contactor® 100HD	Recharger® 150XLHD	Recharger® 280HD	Recharger® 300HD	Recharger® 360HD	Recharger® 902HD
Length	feet	8	11	8	7.54	4.17	4.10
Installed Length	feet	7.5	10.25	7	7.08	3.67	3.67
Width	inches	36	33	47	51	60	78
Height	inches	12.5	18.5	26.5	30	36	48
Bare Chamber Storage	ft³/ft	1.866	2.650	6.079	6.53	10.00	17.31
	gal/ft	13.96	19.82	45.48	48.85	74.80	129.50
Intermediate	ft³/unit	14.00	27.16	42.55	46.27	36.66	63.47
	gal./unit	105	203	318	346	274	475
Stand Alone	ft³/unit	14.93	29.15	48.63	51.59	49.58	99.51
	gal./unit	112	218	364	386	371	745
Min. Installed Storage	ft³/ft	3.84	4.89	9.21	10.51	15.20	27.06
	gal/ft	29	37	69	79	114	202
Intermediate	ft³/unit	28.81	50.17	64.46	74.44	55.73	99.28
	gal./unit	216	375	482	566	417	742
Stand Alone	ft³/unit	30.73	53.84	73.67	101.99	86.72	187.60
	gal./unit	230	403	551	763	649	1404
Min. Cover Required							
	Paved	inches	14	14	14	18	18
Unpaved		16	16	16	24	24	30

The Recharger 300HD, 360HD, and 902HD only come in only one model type and require a separate end plate.
 The Intermediate model for the Recharger models 360HD or 902HD in this case means a model which has an installed length of 3.67' located in the middle of a row.
 The Intermediate model for the Recharger model 300HD in this case means a model which has an installed length of 7.08' located in the middle of a row.
 A stand alone model for the Recharger 300HD, 360HD, or 902HD is a single chamber with two end plates.
 All other models as stand alone units shall be called Model R.

CULTEC CONTACTOR® & RECHARGER®
 Plastic Chambers for Stormwater Management

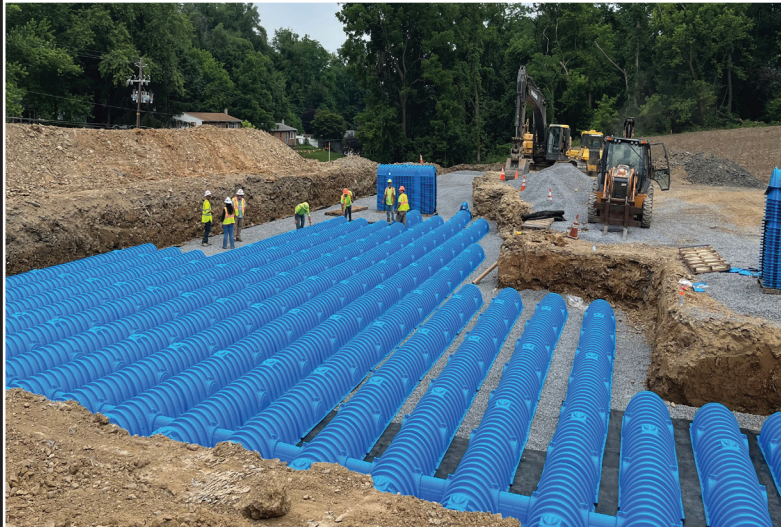


CULTEC CONTACTOR® & RECHARGER®

Plastic Chambers for Stormwater Management

**From Design to Installation,
our client services are unmatched.**

- Exceptional custom design services performed by stormwater chamber specialists.
- Most experienced project managers in the industry.
- Included in popular hydrology software.
- Free HydroCAD® CULTEC Edition available.
- Complimentary project-specific calculations and drawings.
- Lunch & Learn and PDH opportunities available upon request.
- Online CULTEC StormGenie Design Tool.



CULTEC

878 Federal Road • Brookfield, CT 06804 USA

P: 203-775-4416 • Toll Free: 1(800)4-CULTEC • F: 203-775-5887 • www.cultec.com • [f](#) [in](#) [i](#)

**The first stormwater chambers manufactured
with installations dating back over 35 years.**

- Chamber systems are the least expensive and most efficient underground storage option.
- Most extensive product line in the industry.
- Internal manifold saves \$\$\$.
- Earn LEED Credits.
- Maximized storage capability in minimized area.
- Less downtime during handling and placement.
- Minimized shipping costs and stockpile area requirements.
- Sizes to accommodate extremely low-profile depth constraints and high-volume demands.



**Try our online
STORMGENIE DESIGN TOOL
on your next project.**

Scan to learn more.

- Stage-storage Report
- CAD drawings
- Bill of Materials

