



CULTEC Plastic Chambers

- Eliminate flooded basements and yards
- Act as dry wells to contain water from sump pump, washer machine, pool back wash or water softener discharge
- Control rainwater from gutters and impervious surfaces such as patio, tennis court and driveway



System Benefits

- Large storage capacity in small footprint
- Lightweight
- Can be carried by one or two people
- Easily transported by pick-up truck
- Install as a single unit or in a group
- Quick and easy installation
- Minimal site disturbance



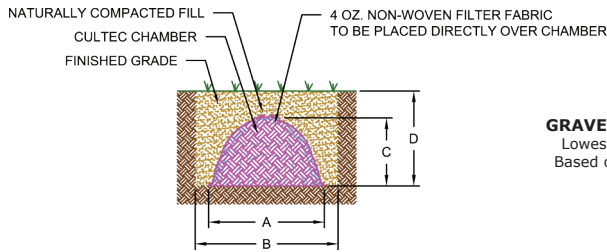
CONTACTOR® & RECHARGER®
PLASTIC CHAMBERS FOR RESIDENTIAL DRAINAGE



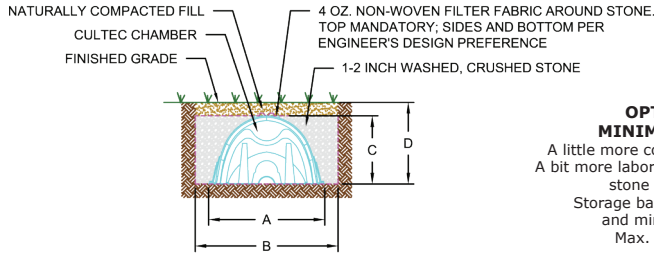
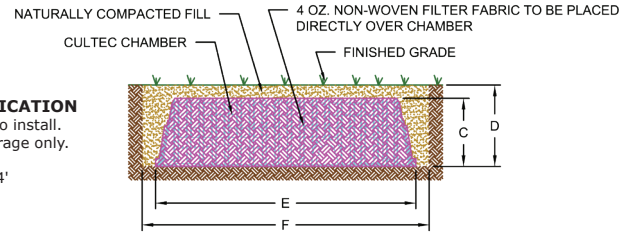
STORMWATER MANAGEMENT SOLUTIONS

CULTEC

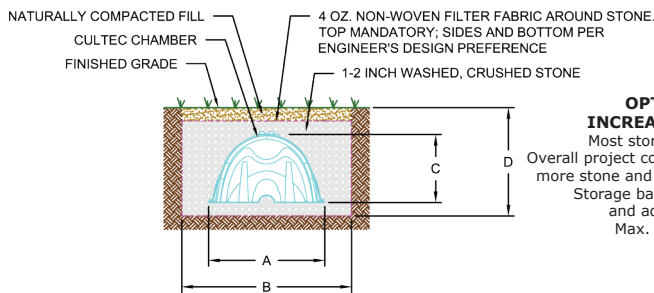
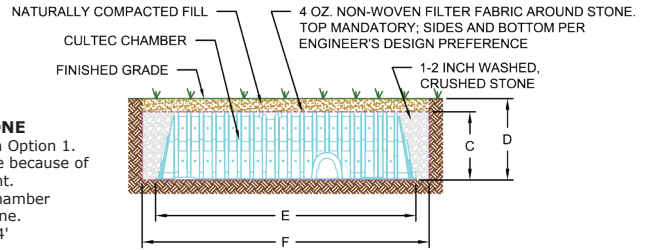
DRY WELL APPLICATIONS



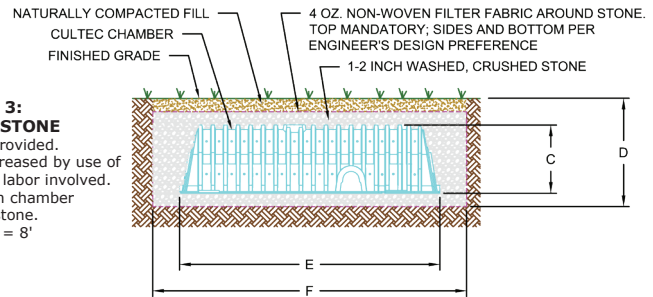
**OPTION 1:
GRAVEL-LESS APPLICATION**
Lowest cost. Easiest to install.
Based on chamber storage only.
No stone.
Max. cover = 4'



**OPTION 2:
MINIMAL STONE**
A little more costly than Option 1.
A bit more labor intensive because of
stone placement.
Storage based on chamber
and minimal stone.
Max. cover = 4'



**OPTION 3:
INCREASED STONE**
Most storage provided.
Overall project cost increased by use of
more stone and extra labor involved.
Storage based on chamber
and added stone.
Max. cover = 8'



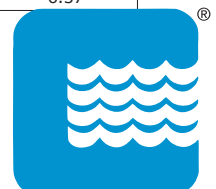
	A	B	C	D	E	F	Bare Chamber Volume		Storage Volume per Installed Chamber		Stone Required per Chamber
	Chamber Width	Trench Width	Chamber Height	Trench Depth	Chamber Length	Trench Length	CF	gal.	CF	gal.	CY
	inches	inches	inches	inches	feet	feet					
Contactor 100HD	36		12.5		8		14.93	112			
Gravel-less Application		48		24.5		9			14.93	112	n/a
Minimal Stone		48		24.5		9			23.96	179	0.84
Increased Stone		60		30.5		10			49.79	372	3.23
Recharger 150XLHD	33		18.5		11		29.15	218			
Gravel-less Application		45		30.5		12			29.15	218	n/a
Minimal Stone		45		30.5		12			45.24	338	1.49
Increased Stone		57		36.5		13			80.27	600	4.73
Recharger 180HD	36		20.5		7.33		25.29	189			
Gravel-less Application		48		32.5		8.33			25.29	189	n/a
Minimal Stone		48		32.5		8.33			37.94	284	1.17
Increased Stone		60		38.5		9.33			65.71	492	3.74
Recharger 280HD	47		26.5		8		48.63	364			
Gravel-less Application		59		38.5		9			48.63	364	n/a
Minimal Stone		59		38.5		9			68.27	511	1.82
Increased Stone		71		44.5		10			105.11	786	5.23
Recharger 330XLHD	52		30.5		8.5		63.4	474			
Gravel-less Application		64		42.5		9.5			63.4	474	n/a
Minimal Stone		64		42.5		9.5			89.55	670	2.42
Increased Stone		76		48.5		10.5			132.25	989	6.37

All calculations and details are for a single Model R stand alone unit installed as a non-traffic application in a grassy area. Values will differ for multiple interlocked units.
Units may be installed with additional stone to provide additional storage volume.
These calculations for stone required per unit for Options 2 & 3 are based upon the cross sectional dimensions listed above using stone.
For unpaved traffic, paved traffic applications, or installations under impervious areas such as patios, contact CULTEC for assistance.

CULTEC

878 Federal Road • P.O. Box 280 • Brookfield, CT 06804 USA

P: 203-775-4416 • Toll Free: 1(800)-4-CULTEC • F: 203-775-1462 • www.cultec.com • [f](#) [in](#) [ig](#)



CULTEC