



## CULTEC Plastic Chambers

- Eliminate flooded basements and yards
- Act as dry wells to contain water from sump pump, washer machine, pool back wash or water softener discharge
- Control rainwater from gutters and impervious surfaces such as patio, tennis court and driveway



## System Benefits

- Large storage capacity in small footprint
- Lightweight
- Can be carried by one or two people
- Easily transported by pick-up truck
- Install as a single unit or in a group
- Quick and easy installation
- Minimal site disturbance



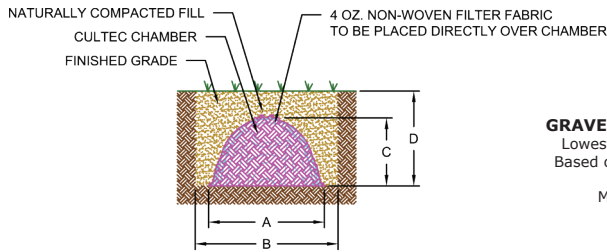
**CONTACTOR® & RECHARGER®**  
**PLASTIC CHAMBERS FOR RESIDENTIAL DRAINAGE**



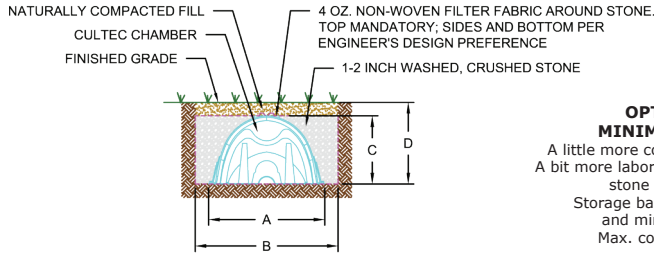
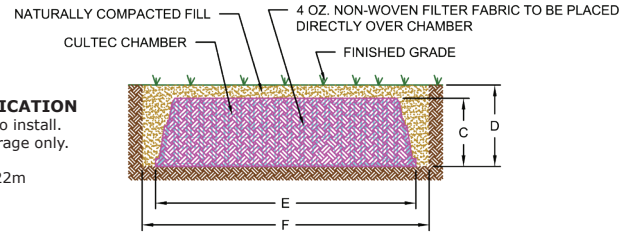
STORMWATER MANAGEMENT SOLUTIONS

**CULTEC**

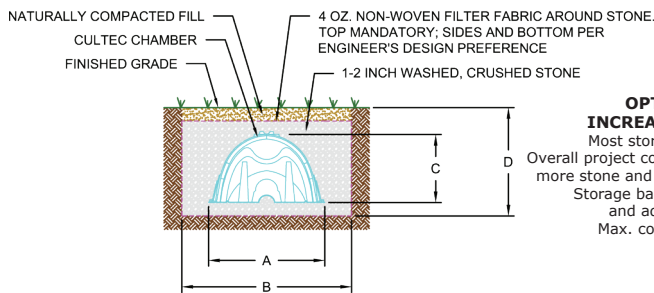
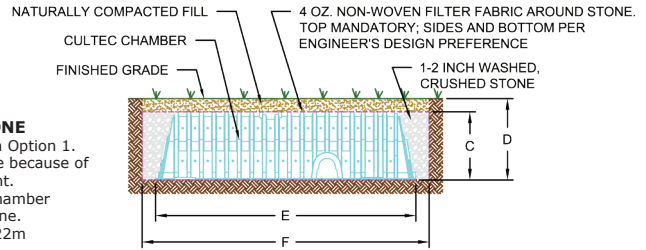
# DRY WELL APPLICATIONS



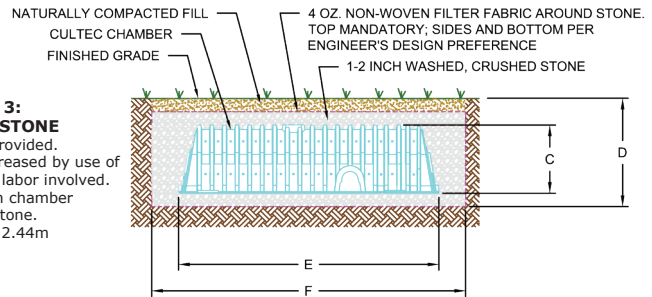
**OPTION 1:  
GRAVEL-LESS APPLICATION**  
Lowest cost. Easiest to install.  
Based on chamber storage only.  
No stone.  
Max. cover = 1.22m



**OPTION 2:  
MINIMAL STONE**  
A little more costly than Option 1.  
A bit more labor intensive because of  
stone placement.  
Storage based on chamber  
and minimal stone.  
Max. cover = 1.22m



**OPTION 3:  
INCREASED STONE**  
Most storage provided.  
Overall project cost increased by use of  
more stone and extra labor involved.  
Storage based on chamber  
and added stone.  
Max. cover = 2.44m



|                          | A             | B            | C              | D            | E              | F             | Bare Chamber Volume |        | Storage Volume per Installed Chamber |        | Stone Required per Chamber |
|--------------------------|---------------|--------------|----------------|--------------|----------------|---------------|---------------------|--------|--------------------------------------|--------|----------------------------|
|                          | Chamber Width | Trench Width | Chamber Height | Trench Depth | Chamber Length | Trench Length | m <sup>3</sup>      | liters | m <sup>3</sup>                       | liters | m <sup>3</sup>             |
|                          | mm            | mm           | mm             | mm           | m              | m             |                     |        |                                      |        |                            |
| <b>Contactor 100HD</b>   | 914           |              | 318            |              | 2.44           |               | 0.42                | 424    |                                      |        |                            |
| Gravel-less Application  |               | 1219         |                | 622          |                | 2.74          |                     |        | 0.42                                 | 424    | n/a                        |
| Minimal Stone            |               | 1219         |                | 622          |                | 2.74          |                     |        | 0.68                                 | 678    | 0.64                       |
| Increased Stone          |               | 1524         |                | 775          |                | 3.05          |                     |        | 1.41                                 | 1408   | 2.47                       |
| <b>Recharger 150XLHD</b> | 838           |              | 470            |              | 3.35           |               | 0.83                | 825    |                                      |        |                            |
| Gravel-less Application  |               | 1143         |                | 775          |                | 3.66          |                     |        | 0.83                                 | 825    | n/a                        |
| Minimal Stone            |               | 1143         |                | 775          |                | 3.66          |                     |        | 1.28                                 | 1279   | 1.14                       |
| Increased Stone          |               | 1448         |                | 927          |                | 3.96          |                     |        | 2.27                                 | 2271   | 3.62                       |
| <b>Recharger 180HD</b>   | 917           |              | 521            |              | 2.23           |               | 25.29               | 715    |                                      |        |                            |
| Gravel-less Application  |               | 1219         |                | 826          |                | 2.54          |                     |        | 0.72                                 | 715    | n/a                        |
| Minimal Stone            |               | 1219         |                | 826          |                | 2.54          |                     |        | 1.07                                 | 1075   | 0.89                       |
| Increased Stone          |               | 1524         |                | 978          |                | 2.84          |                     |        | 1.86                                 | 1862   | 2.86                       |
| <b>Recharger 280HD</b>   | 1194          |              | 673            |              | 2.44           |               | 0.72                | 1378   |                                      |        |                            |
| Gravel-less Application  |               | 1499         |                | 978          |                | 2.74          |                     |        | 1.38                                 | 1378   | n/a                        |
| Minimal Stone            |               | 1499         |                | 978          |                | 2.74          |                     |        | 1.93                                 | 1934   | 1.39                       |
| Increased Stone          |               | 1803         |                | 1130         |                | 3.05          |                     |        | 2.98                                 | 2975   | 1.70                       |
| <b>Recharger 330XLHD</b> | 1321          |              | 775            |              | 2.59           |               | 1.80                | 1794   |                                      |        |                            |
| Gravel-less Application  |               | 1626         |                | 1080         |                | 2.90          |                     |        | 1.80                                 | 1794   | n/a                        |
| Minimal Stone            |               | 1626         |                | 1080         |                | 2.90          |                     |        | 2.54                                 | 2536   | 1.85                       |
| Increased Stone          |               | 1930         |                | 1232         |                | 3.20          |                     |        | 3.74                                 | 3744   | 4.87                       |

All calculations and details are for a single Model R stand alone unit installed as a non-traffic application in a grassy area. Values will differ for multiple interlocked units.  
Units may be installed with additional stone to provide additional storage volume.  
These calculations for stone required per unit for Options 2 & 3 are based upon the cross sectional dimensions listed above using stone.  
For unpaved traffic, paved traffic applications, or installations under impervious areas such as patios, contact CULTEC for assistance.

## CULTEC

878 Federal Road • P.O. Box 280 • Brookfield, CT 06804 USA

P: 203-775-4416 • Toll Free: 1(800)-4-CULTEC • F: 203-775-1462 • [www.cultec.com](http://www.cultec.com) • [f](#) [in](#) [ig](#)

